

Onda Luxy Bubbles

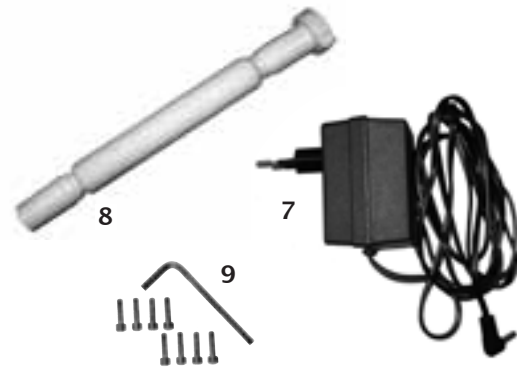
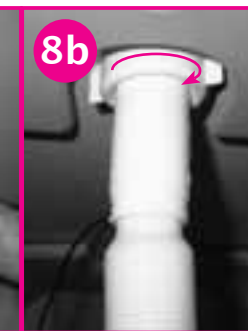
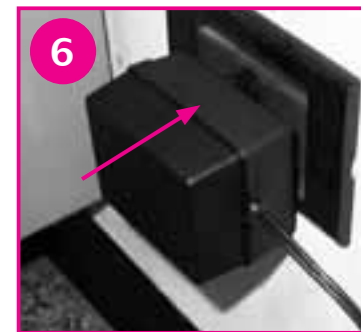
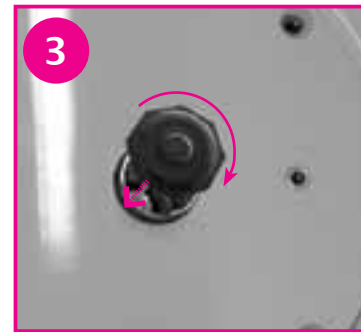


www.okbaby.it

BABY®

LIB109R00EU

OKBABY S.r.l. • Via del Lavoro 26 • 24060 Telgate (BG) Italy
Tel. +39 035 830004 • Fax +39 035 832961
e-mail: okbaby@okbaby.it



**WARNING!!! NEVER LEAVE THE CHILD UNATTENDED.
AN ADULT MUST ALWAYS BE WITH THE BABY TO PREVENT DROWNING!**



Read these instructions carefully before use and keep them safe for future reference. Not following these instructions could cause drowning.

AGE: approximately 0 to 12 months.
MAXIMUM CHILD WEIGHT: 15Kg.
For domestic use only.



PRODUCT OVERVIEW

1. Tub
2. Air nozzles
3. LED lights
4. Pressure plug
5. Control panel with digital thermometer
6. Legs
7. Transformer
8. Drainage hose
9. 8 screws 6mm diameter – wrench
10. Safety plug

With the air-pulling system, air bubbles are produced by special nozzles especially studied for the infant's body. The coloured LED lights were inspired by chromotherapy and make the atmosphere even more relaxing. All of this contributes to a sweet preparation for bedtime. Thanks to its anatomically shaped interior that was especially studied to support the child, this tub was conceived and created to help you bathe your child, in particular in the first few months of life.

0–6 months: Use this position immediately for the first bath, from when the child is only a few days old until he is able to sit up on his own.

6–12 months: Use this position from when the child is able to sit up on his own until you start bathing him in an adult bathtub.

ASSEMBLING THE TUB:

Turn the tub over (Fig. 1).

Place the first pair of legs on the bottom matching the holes on the tub with those on the legs. Fasten the legs using the 4 screws diameter 6mm with the wrench supplied with the tub (Fig.2).

Repeat the operation for the other pair of legs.

Apply the safety plug to the drain on the bottom of the tub (Fig.3).

Return the tub to the position for usage (Fig.4).

Connect the transformer to the connector located on the lower part of the tub (Fig.5), then to the electrical socket (Fig.6).

PRELIMINARY OPERATIONS:

1. Fill the tub to the desired level (approximately 12 litres of water).

2. Make sure the water temperature (visible on the display) is between 36°C and 38°C.

Note: a dot may appear beside the number indicating the temperature. This indicates that the temperature is between the decimal half of the value indicated and the one immediately following it. Example: if the display indicates "36." this means the temperature is between 36.5 and 36.9°C.

3. Place the child in the tub.

4. Start up the air-pulling system by pushing the (A) button. This cycle has a running time pre-set at 15'. You can stop the air-pulling system at any time by pushing the (A) button.

The **chromotherapy system** is composed of four programmes with steady colours and one with varying colours known as the "Relax Bath". All these programmes have a running time of 15'.

Press the (B) button briefly and the following steady colour programmes will appear in sequence:

- Blue
- Green
- Red
- Yellow
- Lights off

With the lights off and keeping the (B) button pressed for 10 seconds, a cycle will be activated that will automatically alternate the sequence of the above colours. Press the (B) button again to stop the cycle.

With the chromotherapy system off, the "Relax Bath" programme can be activated by pressing the (B) button for 3 seconds. The "Relax bath" cycle will start up with the following colour sequence Blue - Indigo - Blue - Violet. Each colour lasts approximately 4' and the complete cycle lasts 15'.

EMPTYING THE TUB:

To empty the tub, follow this procedure:

1. Remove the safety plug in the bottom of the tub (Fig.7).
2. Screw on the drainage hose (Fig. 8a/8b) and direct it towards a sanitary fixture (bathtub or WC) or a container able to hold all the water in the tub.
3. Press the tub plug in completely (Fig.9).

DRYING AND CLEANING THE TUB:

After using and emptying the tub completely, let the hydro system run for at least a minute, pressing the (A) button in order to drain the remaining water in the system and let the pipes dry, ensuring maximum hygiene and cleanliness.

Do not use powders, abrasive creams, strong chemical cleansers, alcohol, trichloroethylene, solvents, etc. to clean the tub.

Use a normal neutral liquid cream cleanser and a soft cloth to clean the product daily.

IMPORTANT ADVICE:

- The child must always remain within arm's reach of an adult to prevent drowning.
- The anatomically shaped interior offers greater support to the child, but will not protect him from injury or drowning.
- Make sure that the bathtub is placed on a flat, stable and safe surface.
- Do not place your child with the stomach facing the bottom of the tub.
- Make sure that everything needed for the bath is ready at hand before bathing your baby. This is important to avoid ever leaving the child unattended.
- Make sure the water is not too hot. The ideal temperature is 37°C (99°F).
- Do not move the tub with the baby in it.
- Always be aware of the risks associated with open flames or other sources of heat, such as electric hot plates, gas flames, etc., close to the tub.
- Disconnect the external power unit from the mains socket before cleaning the tub.
- Connect the power unit to the tub before filling it with water. Do not allow live parts to come into contact with water.

TECHNICAL SPECIFICATIONS:

Product name: Onda Luxy Bubbles

External dimensions: w 74 cm x l 92 cm x h 93 cm.

Total weight, including support legs: 27 kg.

Maximum air pump capacity: 1000 Litres/H

Approximate water volume: 12 Litres.

Primary mains power supply 230V 50 Hz.

Power supply tub interior in low voltage 12V.

Rated power 15 W.

Temperature measuring range: 0 - 50°C +/- 0.5°C

WARRANTY:

In the event of malfunction, the product must be sent in its original box by registered post at the user's expense to:

OKBABY s.r.l. Via del Lavoro, 26 - 24060 Telgate (BG) Italy.

Please put inside the box a clear description of the fault(s), the exact return shipping address, phone number and the receipt or a photocopy of it.

The product will be returned to you in good working order and free of charge within about 30 days. This warranty covers any material or factory defects for 2 (two) years from the date of purchase.

CONDITIONS

1. This warranty is only valid if the defective product is returned with the original receipt or a photocopy of it. OKBABY s.r.l. reserves the right to refuse repairs under warranty without the above mentioned document or if any of the information contained in it is incomplete or illegible.
2. This warranty is null and void if the model number or serial number on the product has been modified, cancelled, removed or made illegible.
3. This warranty is null and void if the product has been tampered with.

THE WARRANTY DOES NOT COVER

- Periodic maintenance and repairs or replacement of parts subject to normal wear and tear.
- Any adjustments or changes made to the product.
- Shipping costs from the customer to the service centre and associated risks.
- Any physical injuries, whether accidental or caused by inappropriate or improper use of the device.
- Any damage caused by failure to follow the instructions in the user manual.
- Repairs by unauthorised persons or by the customer.
- Acts of God: lightning, flood, fire or other causes not attributable to OKBABY s.r.l.

Manufactured by:

OKBABY SRL

Via Del Lavoro 26

24060 Telgate BG Italy

www.okbaby.it